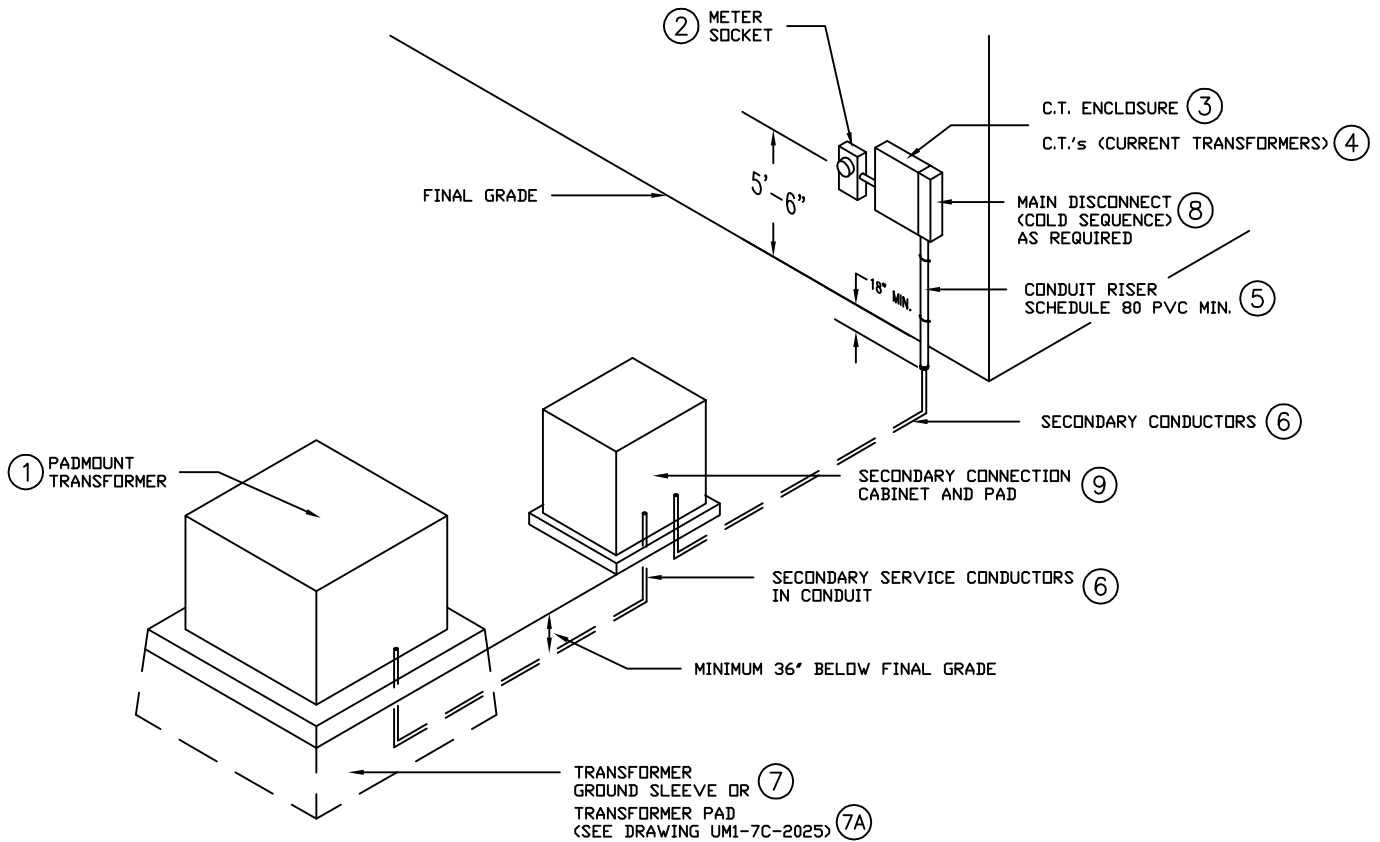



FIGURE 12MCC

NOTES:

1. SEE "GUIDELINES, CONTACTS, FOR COMMERCIAL METERING."
2. REQUIRED WHEN CUSTOMER SECONDARY CONDUCTORS EXCEED EIGHT PER PHASE
3. MAXIMUM 8 - 1000 MCM CONDUCTORS PER PHASE.



ITEMS 1, 4, 7 FURNISHED AND INSTALLED BY UNITED POWER ITEMS 3, 5, 6, 7A, 8, 9 FURNISHED AND INSTALLED BY CUSTOMER ITEM 2 FURNISHED BY UNITED POWER AND INSTALLED BY CUSTOMER		 UNITED POWER, INC. P.O. BOX 929 • BRIGHTON, CO. 80601	
ENG. APPROVAL:	DATE:	DWN BY: <i>ES</i>	C.T. METER INSTALLATION THREE PHASE WITH SECONDARY CONNECTION CABINET
OPER. APPROVAL:	DATE:	ISSUED BY: <i>ER</i>	
		ISSE DT:	