

FIGURE 1PO

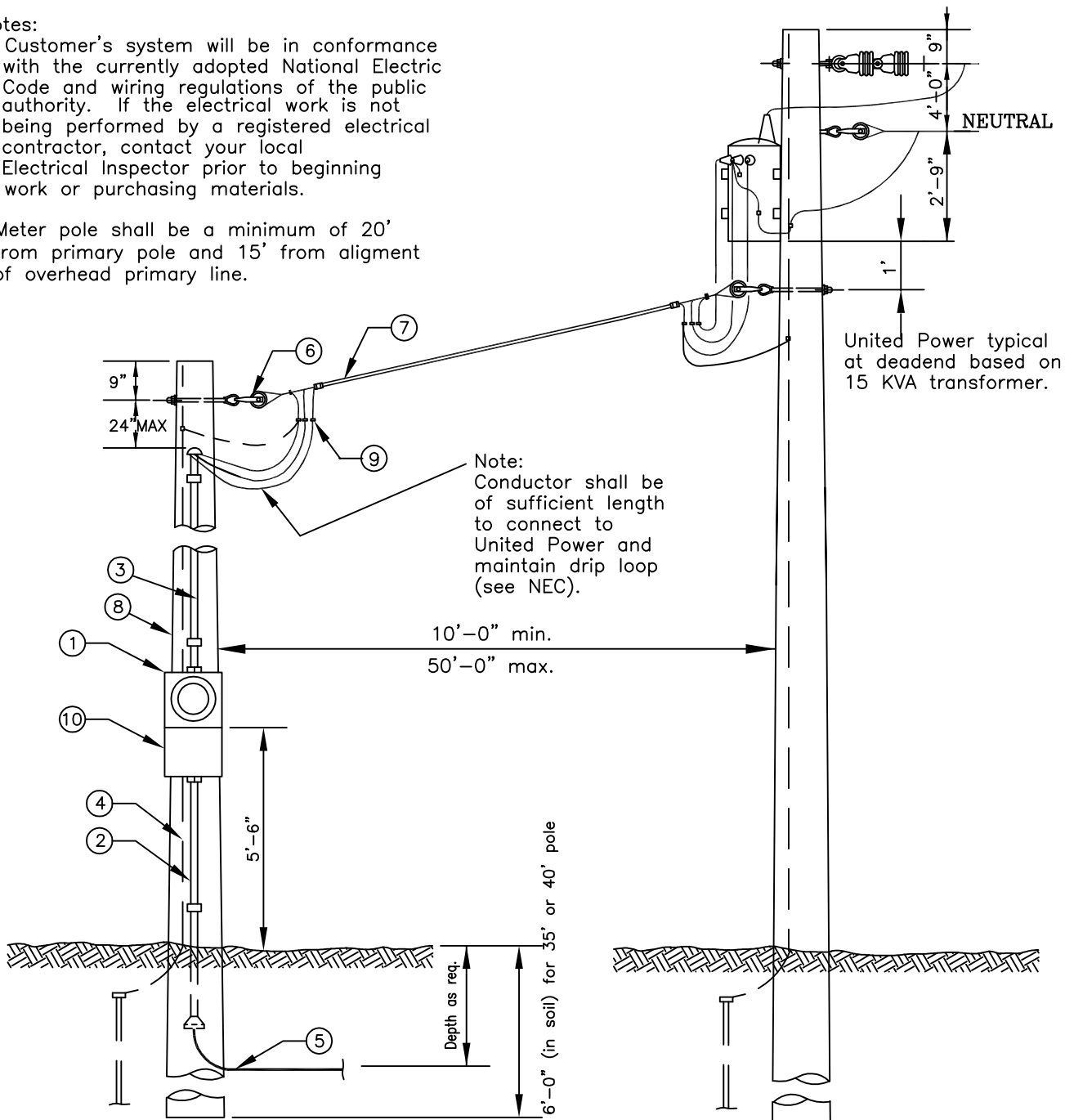
CUSTOMER

GUIDELINE ONLY

UNITED POWER

Notes:

1. Customer's system will be in conformance with the currently adopted National Electric Code and wiring regulations of the public authority. If the electrical work is not being performed by a registered electrical contractor, contact your local Electrical Inspector prior to beginning work or purchasing materials.
2. Meter pole shall be a minimum of 20' from primary pole and 15' from alignment of overhead primary line.



ITEM NO.	MATERIAL	ITEM NO.	MATERIAL
1	METER SOCKET	6	SECONDARY CLEVIS
2	CONDUIT, SERVICE	7	SERVICE
3	CONDUIT AND CONDUCTOR SERVICE ENTRANCE	8	POLE-30',35' OR 40' AS REQUIRED
4	GROUND SYSTEM	9	CONNECTORS
5	UNDERGROUND CABLE	10	MAIN DISCONNECT



UNITED POWER, INC.
P.O. BOX 929 • BRIGHTON, CO. 80601

ITEM 6, 7, 8, 9 FURNISHED AND INSTALLED BY UNITED POWER.
ITEMS 1, 2, 3, 4, 5, 10 FURNISHED AND INSTALLED BY CUSTOMER.

ENG. APPROVAL: _____ DATE: _____
OPER. APPROVAL: _____ DATE: _____

DWN BY: HVR
ISSUED BY: _____
ISSE DT: _____

UNDERGROUND SERVICE-METER ON POLE
INDIVIDUAL CUSTOMER