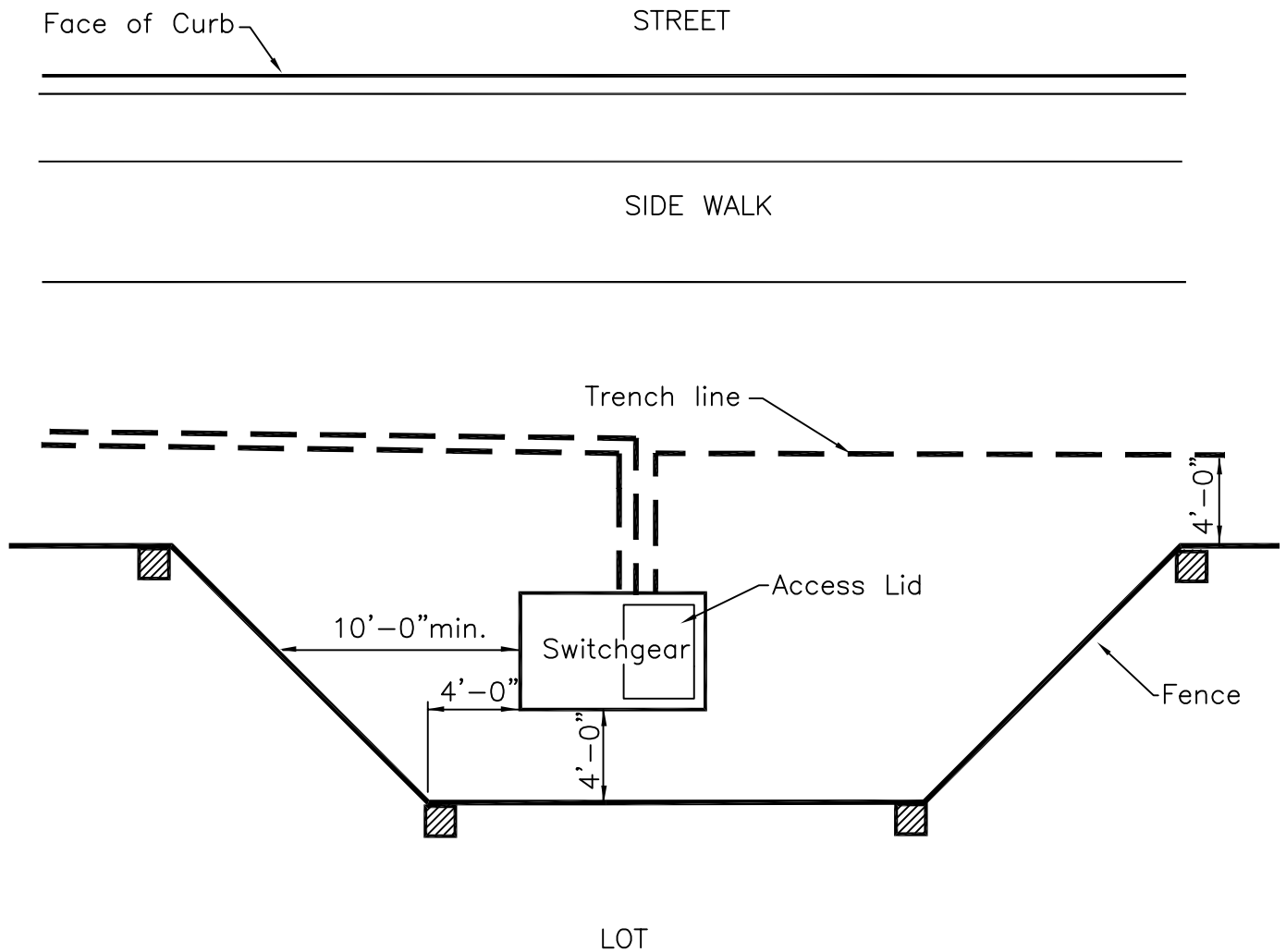



FIGURE 2S

TYPICAL SWITCHGEAR LOCATION  
AT MID BLOCK



ISSUED	12/28/04 By Henry Ross	
APPROVAL	12/28/04 By Ed Roush	
APPROVAL		
DATE	BY	REVISIONS


**UNITED POWER**  
 UNITED POWER, INC.  
 P.O. BOX 929 • BRIGHTON, CO. 80601  
 TYPICAL SWITCHGEAR LOCATION  
 AT MID BLOCK