




Your Touchstone Energy® Partner 

P.O. Box 929, Brighton, CO 80601  
500 Cooperative Way, Brighton, CO 80603  
(303) 659-0551 • 1-800-468-8809 • Fax (303) 637-1338  
www.unitedpower.com

## CONTACTS, GUIDELINES FOR COMMERCIAL METERING

Electricians working on commercial projects and projects requiring CT metering must coordinate the project with United Power's metering personnel. The following persons at United Power are responsible for commercial metering.

1. Meter and Special Equipment Foreman 303-637-1326
2. Meter and Special Equipment Superintendent 303-637-1239

---

Single-phase self-contained (straight) metering may be used up to and including 400-amp service. Any service above 400 amps requires CT metering. 400-amp self-contained meter bases are available from United Power. Please contact the United Power Warehouse, telephone 303 637-1226.

Three-phase self-contained (straight) metering may be used up to and including 200-amp service. Any service above 200 amps requires CT metering.

If the project has cold sequencing, the customer is responsible for the initial installation, operation, and any required maintenance, repair, and/or replacement of disconnect gear, fuses, or breakers from the point of connection in the secondary compartment of the United Power electric transformer.

### **CT Metering:**

United Power shall provide the meter base and the CTs for CT metering. Electricians must call the Meter and Special Equipment Foreman or Superintendent to schedule pick up of meter base and CTs at United Power.


Standard CTs provided by United Power are bar-type, outside hole to outside hole, approximately 11 inches, commonly two-hole, top and bottom, slotted hole on inside. Any variation will be a special order, which takes approximately six weeks for delivery. Electrician must advise United Power in advance to avoid delay in acquisition of CTs.

Slip over buss CT's: maximum buss width is 4 ¼ inches, maximum thickness is ¾ inch.

Customer shall provide the CT cabinet and install the meter base and CTs.

The meter base and CTs shall not be mounted on the transformer. Meter bases must be mounted 5 feet 6 inches to the center of the meter base above the ground on an exterior wall of a building for easy access by United Power personnel 24 hours a day, seven days a week. The CT cabinet may be on either exterior or interior walls, but must be accessible to United Power upon request. Maximum acceptable length between meter base and CT cabinet is 100 feet with a maximum of three 90 degree turns in the one-inch conduit. Coordinate exact location with United Power meter department personnel.



Your Touchstone Energy® Partner 

P.O. Box 929, Brighton, CO 80601  
500 Cooperative Way, Brighton, CO 80603  
(303) 659-0551 • 1-800-468-8809 • Fax (303) 637-1338  
www.unitedpower.com

**Meter Raceway:** Customer shall provide and install a 1-inch conduit from the CT cabinet to the meter base. United Power will wire between the CT cabinet and meter base. Electrician must call United Power's Special Equipment Foreman to schedule wiring.

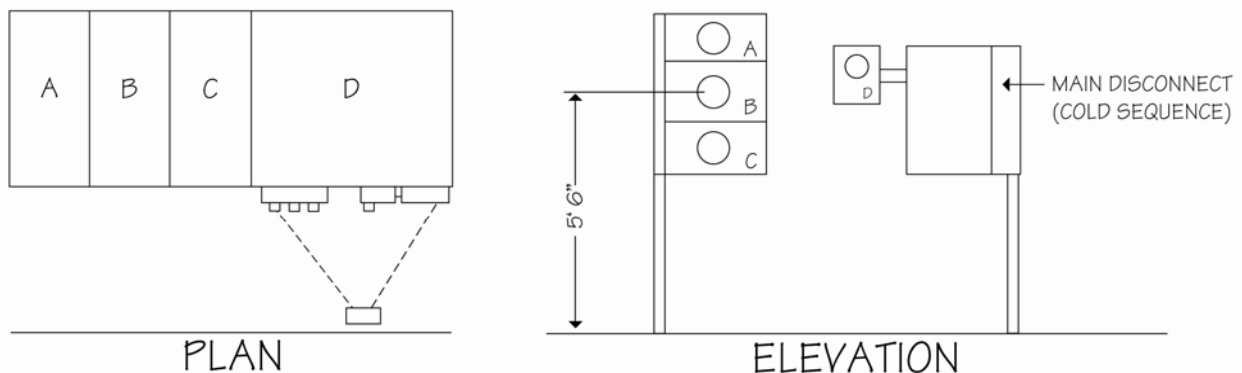
A maximum of eight conductors per phase, maximum size of 1000 MCM copper shall be permitted in the secondary compartment of the transformer. If more and/or larger conductors are specified, the customer shall furnish and install a secondary connection cabinet as approved by United Power.

Customer's electrician must trench and install both the conduits and the secondary service conductors into transformer from the meter base, main disconnect, or CT cabinet. United Power will **NOT** trench or hand dig to install any facilities on the secondary side of the transformer.

Customer's electrician must schedule with the Meter and Special Equipment Superintendent to open the transformer for electrician to pull in secondary service conductors from the meter base, main disconnect, or CT cabinet. Call the Meter and Special Equipment Superintendent at 303-637-1239.

If a commercial building has two or more self-contained meters and one or more CT metered service entrances, the CT metered service entrance(s) **must** have cold sequencing. Please see the following note for addressing and the sketch below for details.

Commercial buildings (including apartment buildings) having two or more meters must have each meter base identified with a brass tag showing the unit number or address. The Customer's electrician shall also provide a plan view of BOTH the building showing the location of each unit AND the configuration of the meter bases on the building. (Example below.)



Finally, electricians shall schedule terminations and connection of service wires to the transformer. Termination must be scheduled after inspection and approval of the service by the electrical inspector. Electricians must provide wire size and number of runs to be terminated. Please fax the attached form to the Meter Shop at 303-659-2172, to the attention of the Meter and Special Equipment Superintendent. Terminating and energizing of service shall be completed by the end of the fifth business day following receipt by United Power of inspection release.